



+ 1716

BARATARIA RETAIL

BARATARIA BLVD, MARRERO, LA 70072



GLA: 18,000 SF

TRAFFIC: 35,900 VPD (BARATARIA)

WEB LINK: [HTTP://WWW.LACDB.COM/LISTING/RTPU_WEUKNO](http://www.lacdb.com/listing/Rtpu_wEukno)

+ DEMOGRAPHICS

2019 DRIVE TIME ESTIMATES	TOTAL POPULATION	TOTAL HOUSEHOLDS	AVG. HH INCOME	MED. HH INCOME	PER CAPITA INCOME
5 MIN	52,137	19,394	\$60,758	\$50,862	\$22,633
10 MIN	114,629	42,773	\$57,301	\$47,357	\$21,514
15 MIN	200,274	76,941	\$59,367	\$48,618	\$22,937

DISCLAIMER: THIS SITE PLAN SHOULD ONLY SERVE AS AN APPROXIMATION OF THE CENTER'S LOCATION, LAYOUT, TENANTS, AND SQUARE FOOTAGE. NAMES, IMAGES, OR REPRESENTATIONS OF TENANTS, STREETS, OR PARKING SPACES SHALL NOT BE CONSIDERED A WARRANTY THAT THESE ELEMENTS ARE ACCURATE OR WILL CONTINUE TO EXIST. THE USE OF DEMOGRAPHICS ARE FOR ILLUSTRATIVE PURPOSES ONLY AND SHALL NOT ACT AS A WARRANTY OF THEIR ACCURACY.

L+A RETAIL

CONTACT:
JOHN MOSS

1200 S. CLEARVIEW PKWY,
STE. 1166
NEW ORLEANS, LA 70123



L+A RETAIL LICENSED BY LREC

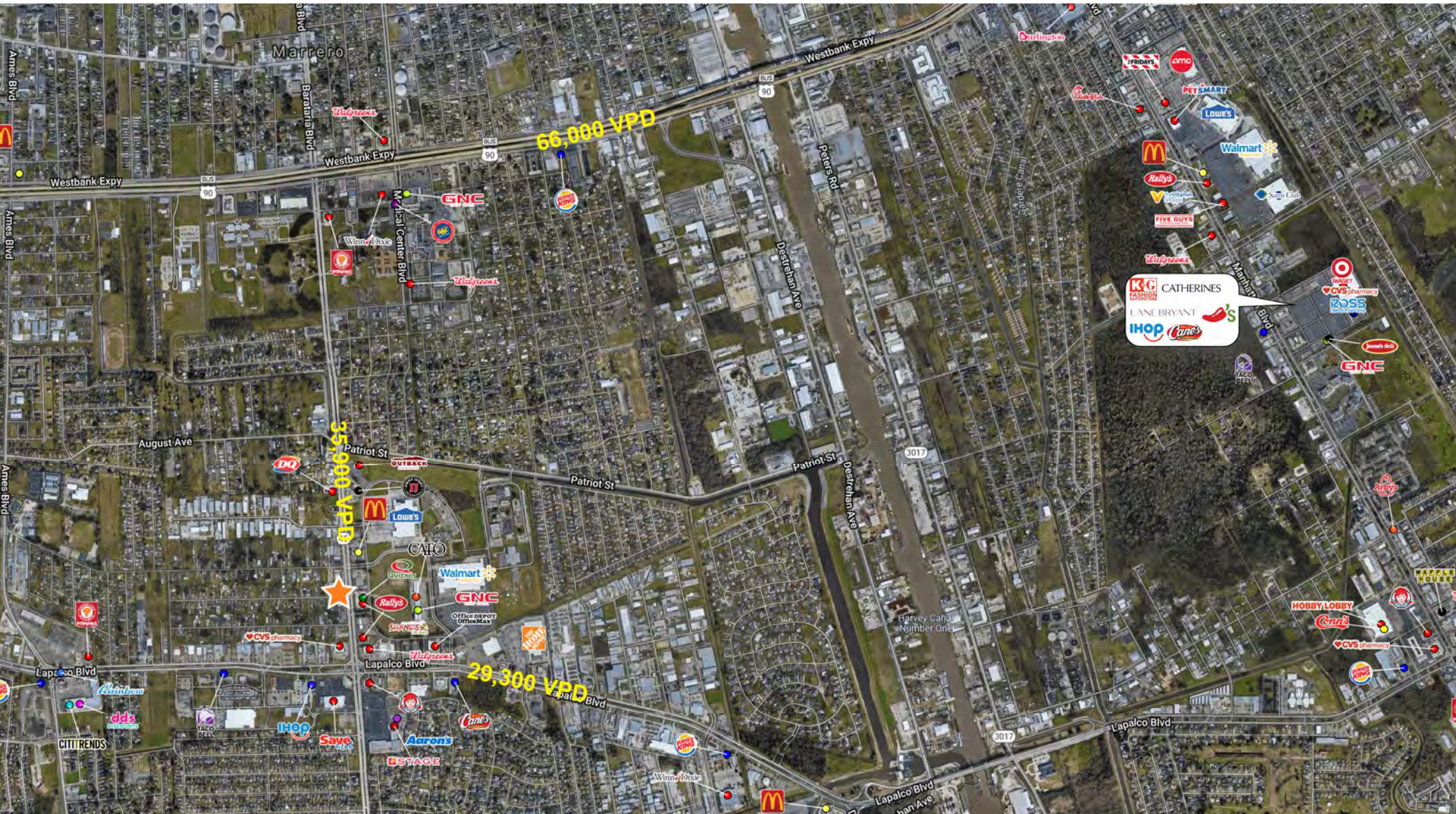
T 504+733+1212 WWW.LARETAIL.COM



+ 1716

BARATARIA RETAIL

BARATARIA BLVD, MARRERO, LA 70072



GLA: 18,000 SF

TRAFFIC: 35,900 VPD (BARATARIA)

WEB LINK: [HTTP://WWW.LACDB.COM/LISTING/RTPU_WEUKNO](http://www.lacdb.com/listing/RTPU_WEUKNO)

L+A RETAIL

CONTACT:
JOHN MOSS

1200 S. CLEARVIEW PKWY,
STE. 1166
NEW ORLEANS, LA 70123



L+A RETAIL LICENSED BY LREC

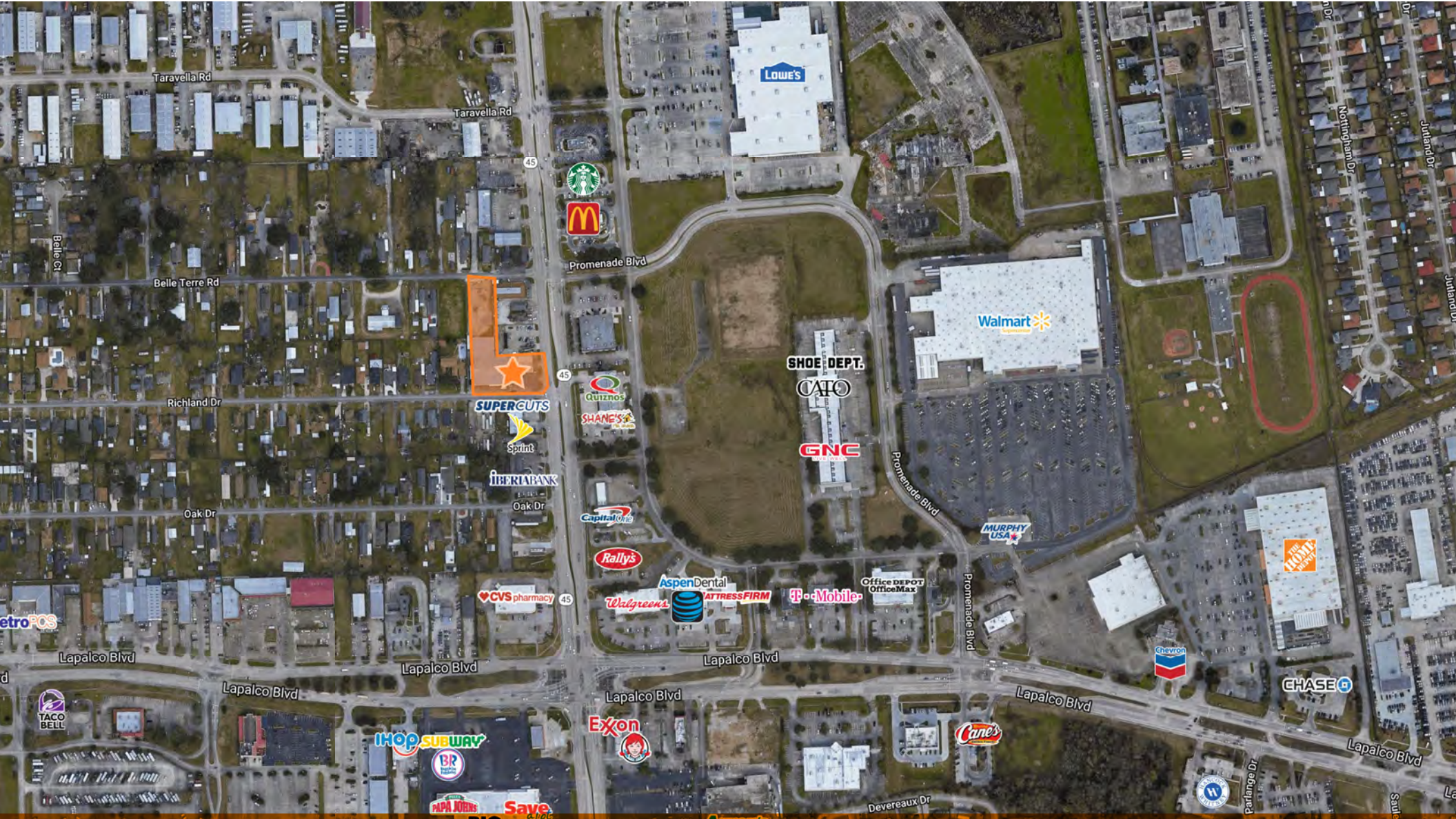
T 504+733+1212 WWW.LARETAIL.COM



+ 1716

BARATARIA RETAIL

BARATARIA BLVD, MARRERO, LA 70072



GLA: 18,000 SF

TRAFFIC: 35,900 VPD (BARATARIA)

WEB LINK: [HTTP://WWW.LACDB.COM/LISTING/RTPU_WEUkno](http://www.lacdb.com/listing/rtpu_wEUkno)

L+A RETAIL

CONTACT:
JOHN MOSS

1200 S. CLEARVIEW PKWY,
STE. 1166
NEW ORLEANS, LA 70123



L+A RETAIL LICENSED BY LREC

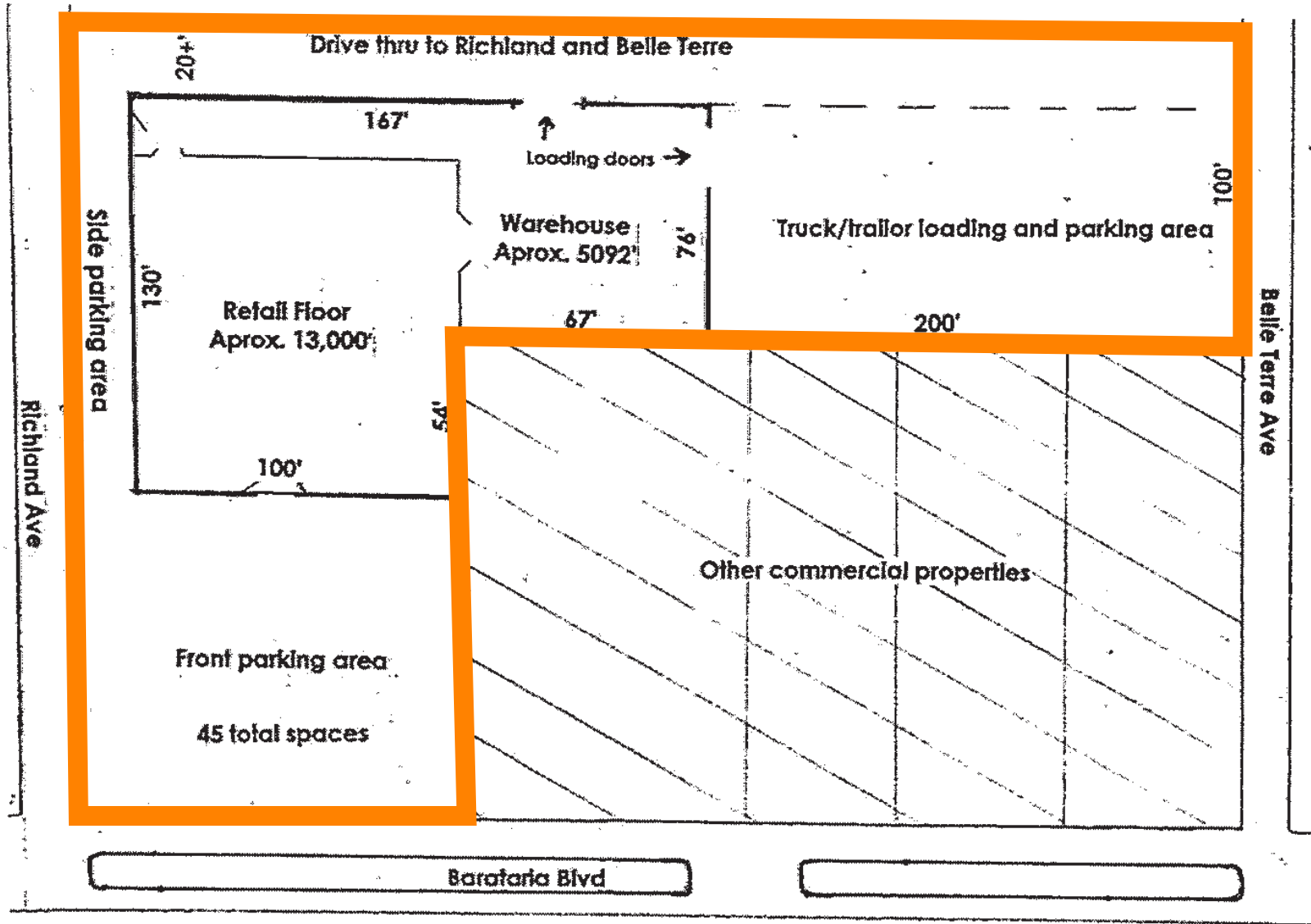
T 504+733+1212 WWW.LARETAIL.COM



+ 1716

BARATARIA RETAIL

BARATARIA BLVD, MARRERO, LA 70072



GLA: 18,000 SF

TRAFFIC: 35,900 VPD (BARATARIA)

WEB LINK: [HTTP://WWW.LACDB.COM/LISTING/RTPU_WEUKNO](http://www.lacdb.com/listing/rtpu_weukno)

L+A RETAIL

CONTACT:
JOHN MOSS

1200 S. CLEARVIEW PKWY,
STE. 1166
NEW ORLEANS, LA 70123



L+A RETAIL LICENSED BY LREC

T 504+733+1212 WWW.LARETAIL.COM